



Installation and Care of Solutions Magnetic Filter (MF-2.5-SS)

Installation

The MF should be installed with the sample inlet and outlet oriented as per sketch. Inlet and outlet ports are 1/4" FNPT. We suggest the use of a braided hose on the top to aid in cleaning and maintenance.

The MF should be installed downstream of the sample coolers and pressure reducing element as the MF is rated for 400 psi @ 70°F.

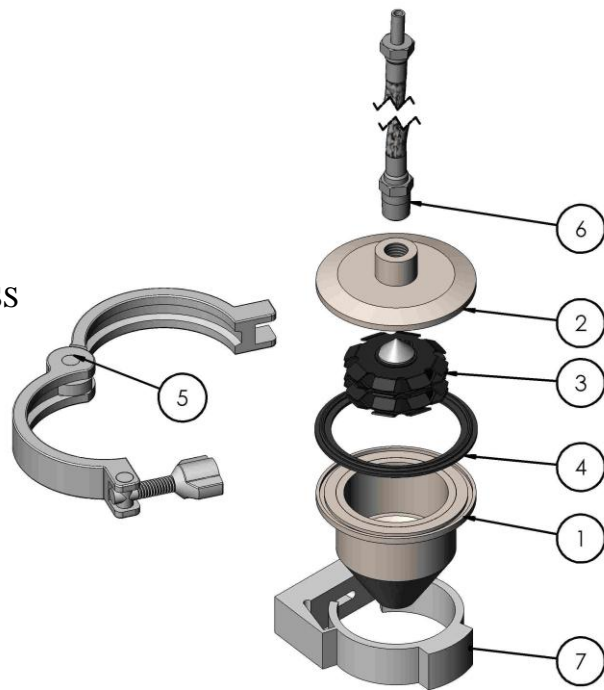
Sample flow is bi-directional, this allows the operator to use either the top or bottom port for sample inlet as per sketch.

Maintenance

Before cleaning the MF-2.5-SS ensure that the sample line is isolated and atmospheric pressure has been reached in line. Once it has been verified that it is safe to open the sample line, remove the clamp and top plate from the MF assembly. Remove the magnetic capsule from the housing. Clear capsule of debris with water or compressed air. Replace the capsule in the housing. Inspect the seal. Replace the top cap and secure the clamp in place. Flow to the MF can then be safely resumed.

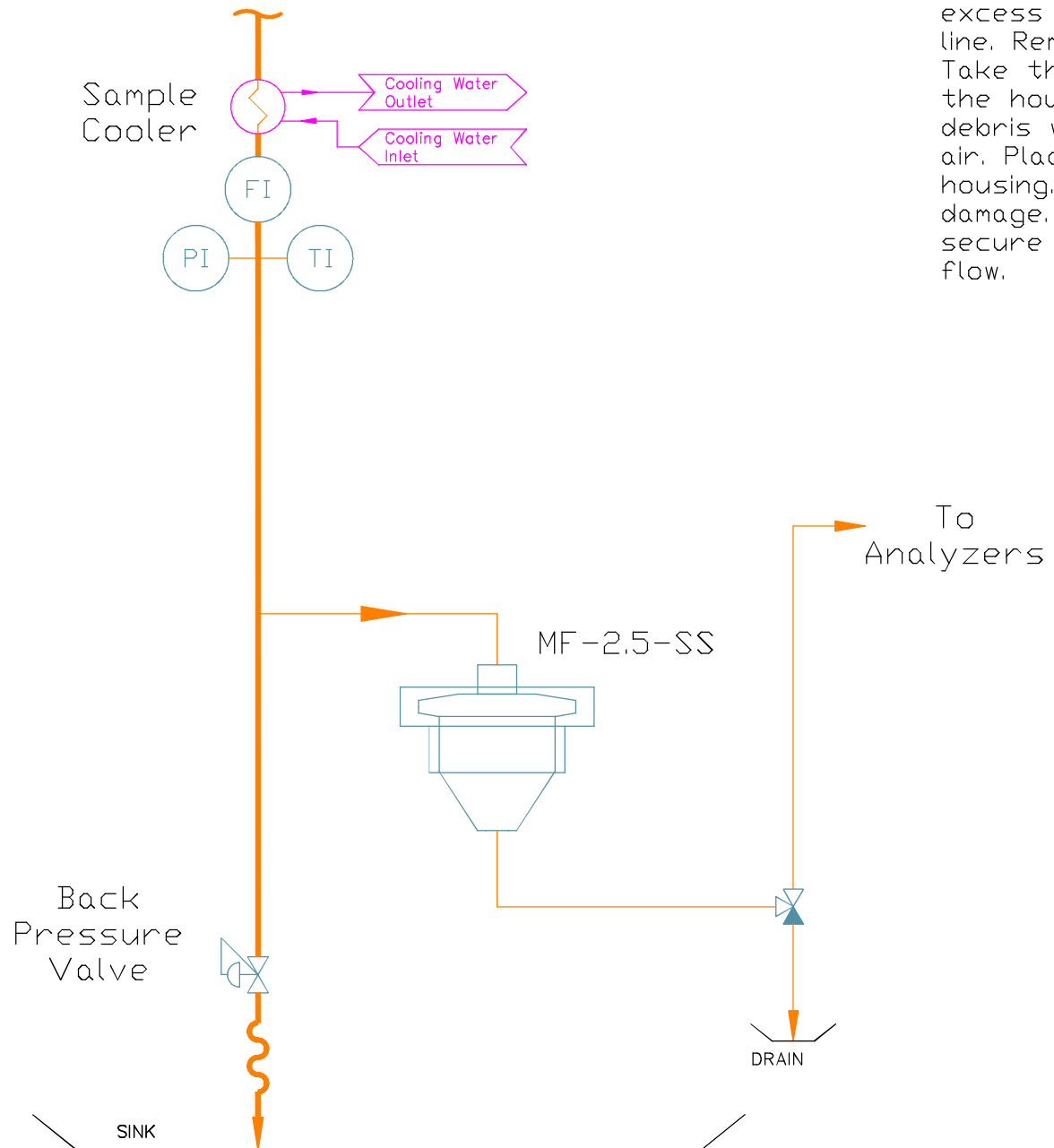
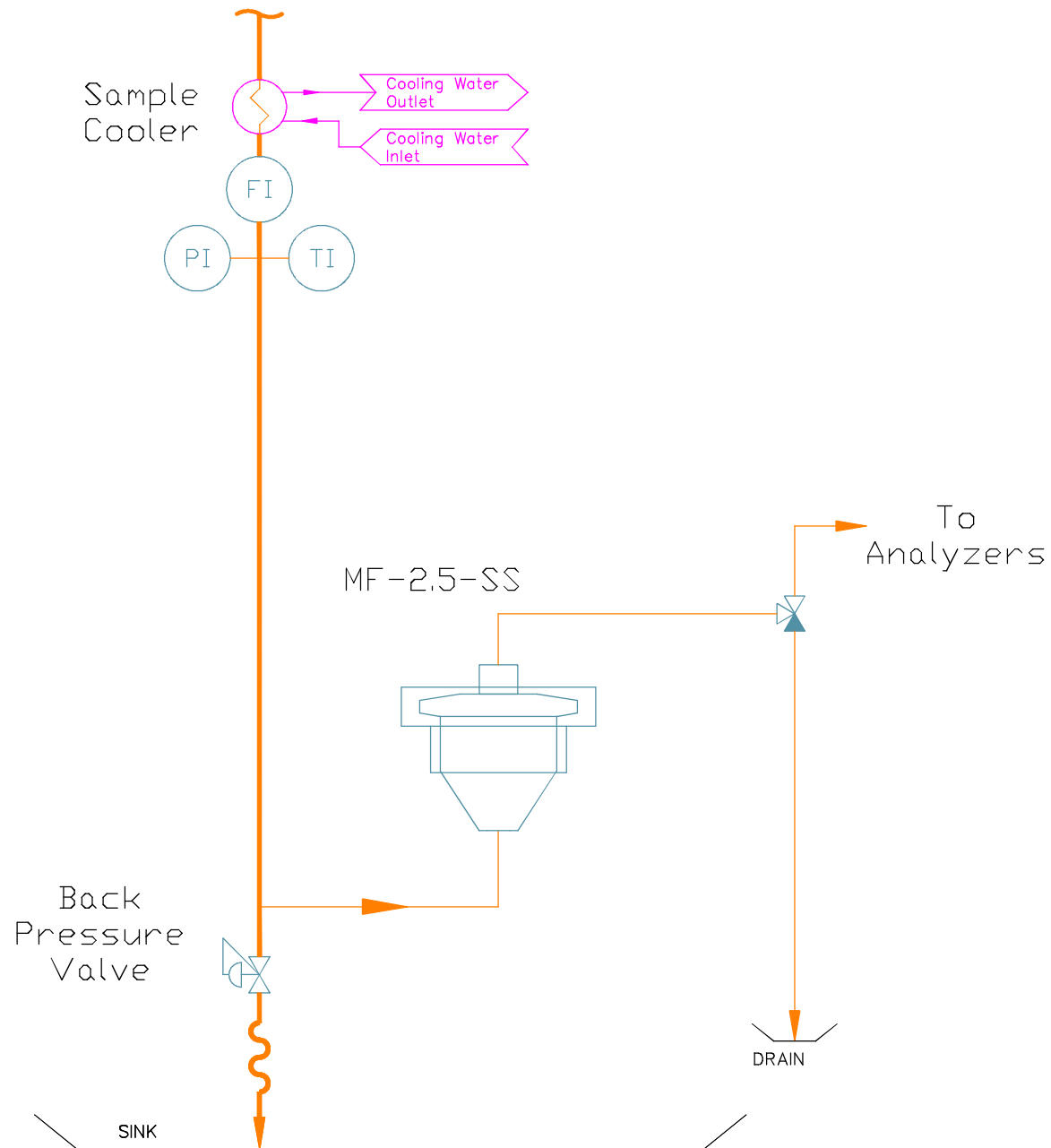
Replacement Parts:

<u>Item #</u>	<u>P/N</u>	<u>Description</u>
1	1-0020	Assy, MF housing
2	1-0024	Assy, MF top cap
3	530200028	Element, filter, MIDI core, Magmom brand
4	40MP-U250	Gasket, 2.5" black buna
5	13MHHM2.5	Clamp, single pin, 2.5" 304 SS
6	SS-1/4-24	Assy, Hose, Teflon with SS over braid, 24" 1/4" tube
7	CLIC 59	Clamp, Clic 59, plastic



Mounting Option 1

Mounting Option 2



NOTES:

Flow in the MF is bi-directional. Sample inlet can be on the top or bottom.

TO CLEAN THE MWS:

Isolate the sample flow from the magnetic filter. Eliminate excess pressure from the sample line. Remove the clamp and top cap. Take the magnetic capsule out of the housing. Clear capsule of debris with water or compressed air. Place the capsule back in the housing. Inspect the gasket for damage. Position the top cap and secure the clamp. Resume sample flow.



1174 E Bear Hollow Circle
 Draper, UT 84020
 Phone: 801-576-8796
 Fax: 801-568-2440
 Email: info@samplepanels.com

Solutions Inc.
 MF-2.5-SS
 Magnetic Filter

Design: DRW
 Drawn: AGT

No.	Date	Revision	By	Approved
0	9/7/12	Suggested piping layout	AGT	

MF-2.5-SS - Magnetic Filter

DRAWING NUMBER: MF-P-01